

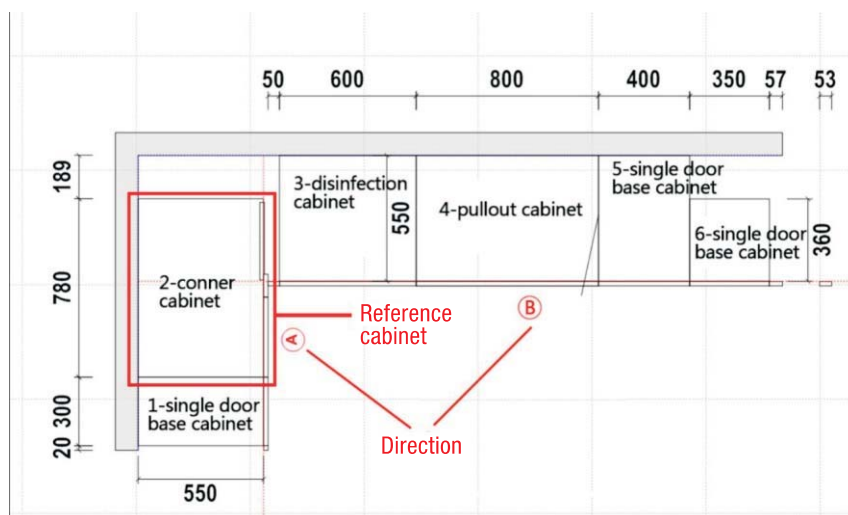
# Installation of Base cabinet

## 2 Installation Procedure

- a) Check the drawing
- b) Position
- c) Unpack cartons
- d) Wall cabinet assembly
- e) Base cabinet assembly
- f) Wall cabinet installation
- g) Base cabinet installation
- h) Countertop installation
- i) Accessory installation
- j) Clean

## 3 Check the Drawing

### 3.1 Find out the each cabinet and mark on the drawing



### 3.2 Confirm the “Installation Direction (from which direction to which) ” according to the drawing.

## 4 Unpack the cartons

### 4.1 Check the quantity of the cartons to make sure no carton is missing



### 4.2 Unpack the carton



### 4.3 Sort out the panels



#### 4.4 Open the accessory carton

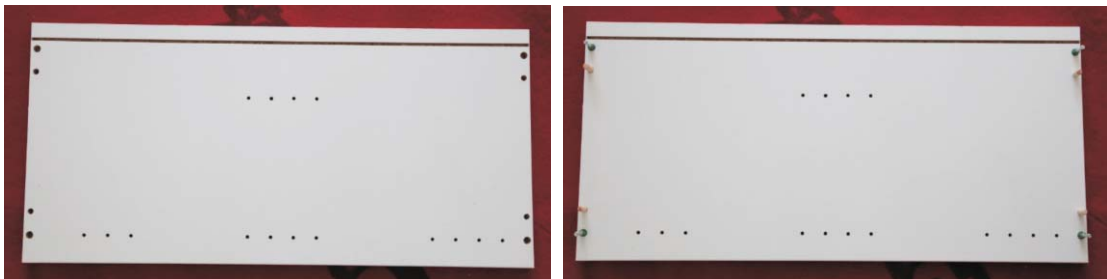


#### 4.5 Sort out the accessory



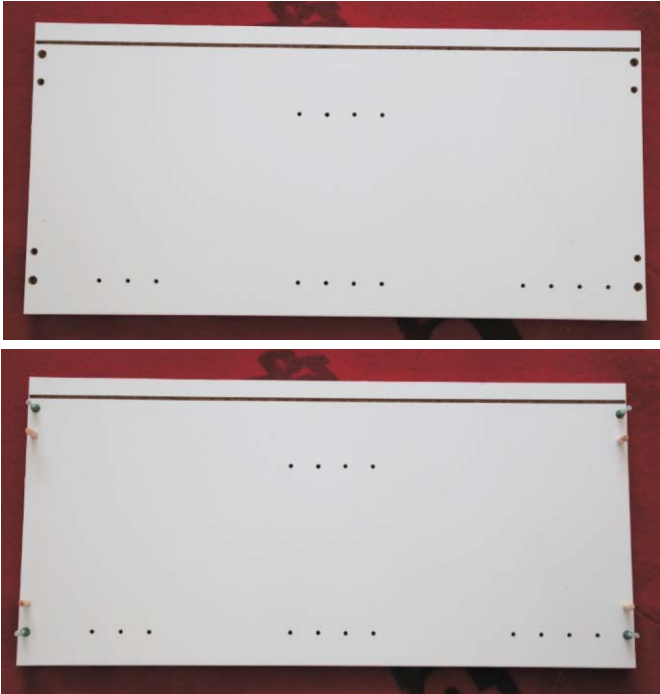
### 5 Assemble the Wall Cabinets

#### 5.1 Place the left panel on the work-top or the ground

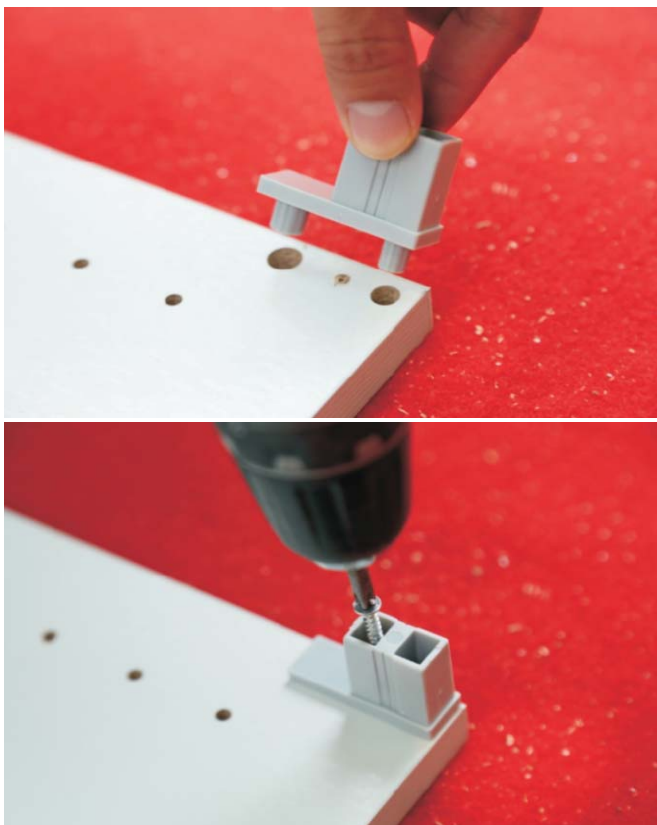


## 6 Assemble the base cabinet

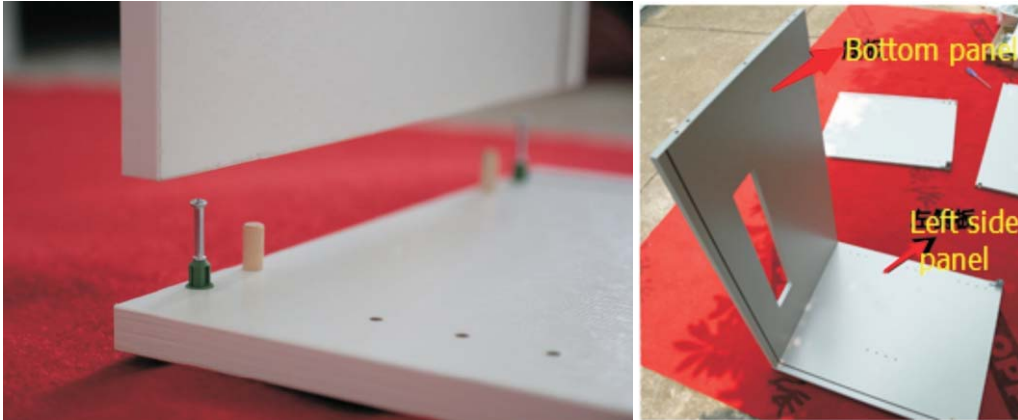
### 6.1 Place the left panel on the work-top or ground



Fix the aluminum beam to the right panel with 15mm screw



**6.2** Connect the bottom panel and the left panel



**6.3** Fix the two parts with eccentric wheel

**6.4** Install the strengthened panel to the left panel



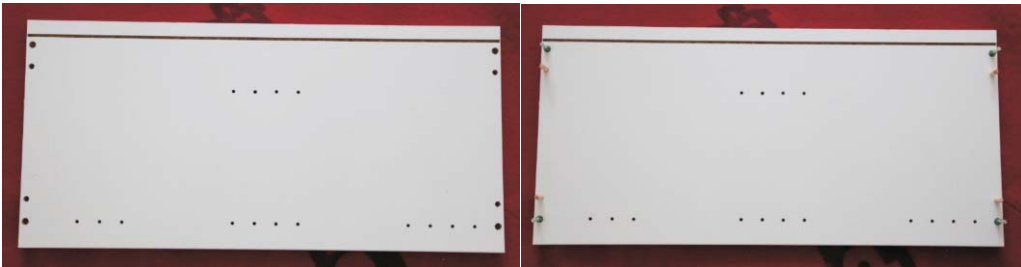
**6.5** Fix the two parts with eccentric wheel



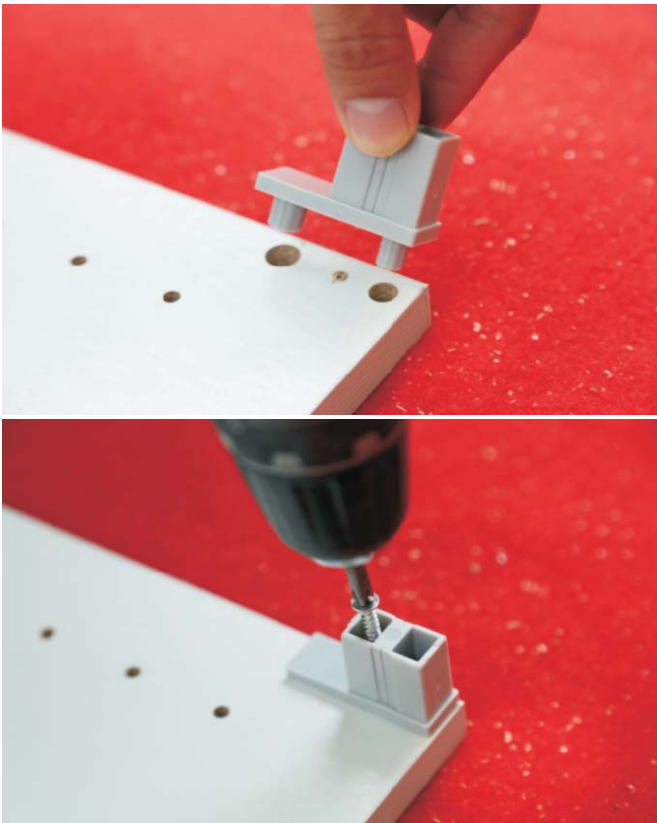
**6.6** Insert the aluminum beam



**6.7** Place the right panel on the work-top or ground



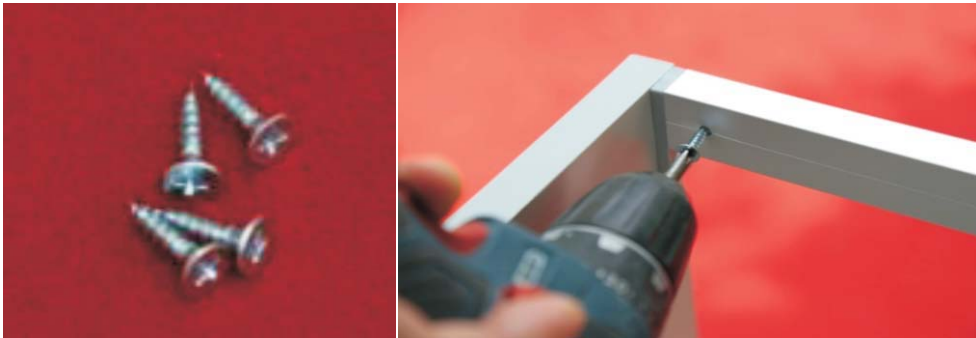
Fix the aluminum beam to the right panel with 15mm screw



**6.8** Install the right front panel



**6.9** Fix the aluminum beam with 15mm screw



**6.10** Insert the back panel





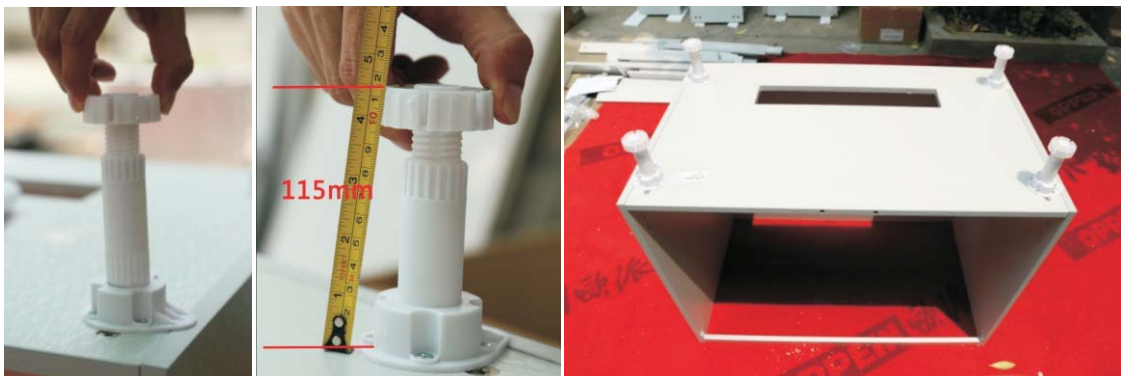
**6.11** Fix the back panel and the strengthened panel with 15mm screw



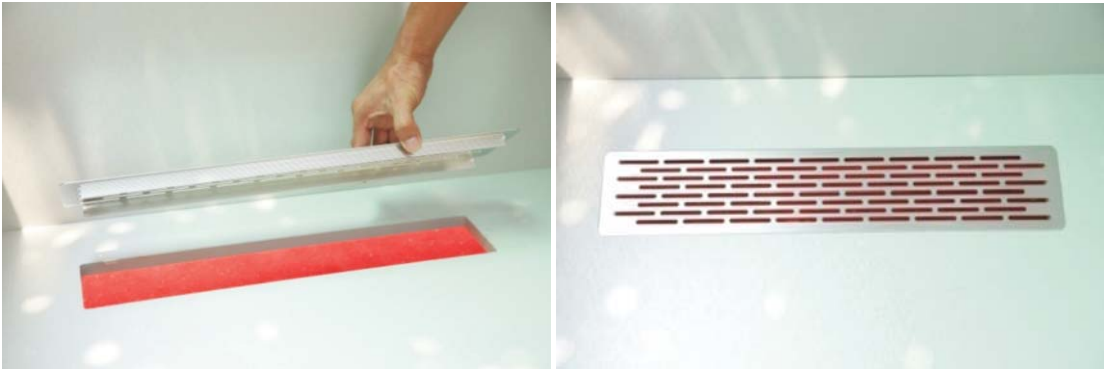
**6.12** Fix the adjustable leg with 15mm screw



**6.13** Adjust the height to 115mm, like the picture shows



**6.14** Fix the ventilation vent to the bottom panel



**6.15** Install the adjustable shelves support



## 6.16 Install the plastic insert to the shelves



Fix the shelves and the shelves support with the screw on the plastic insert.



## 7.5 Fix the adjacent cabinets

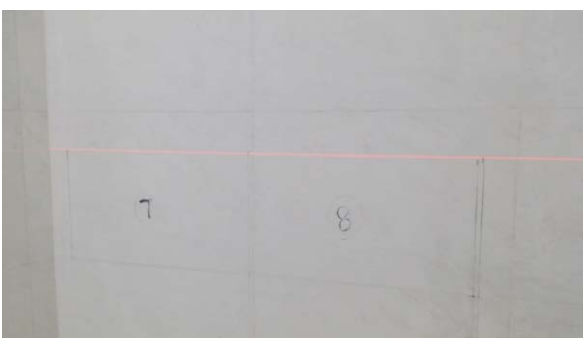


## 8 Install the Base Cabinet

### 8.1 Set a line on the wall in line with the ground



Confirm the position of each cabinet according to the drawing.

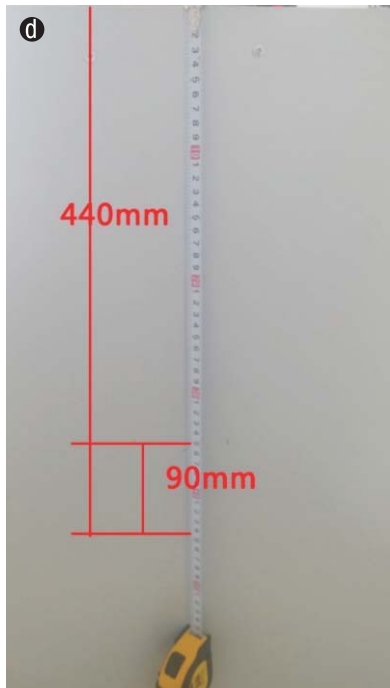
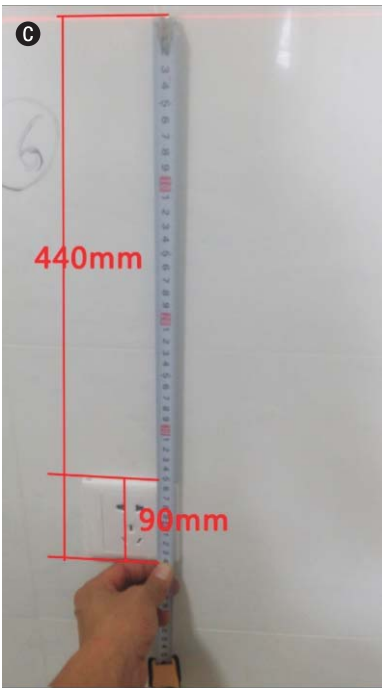
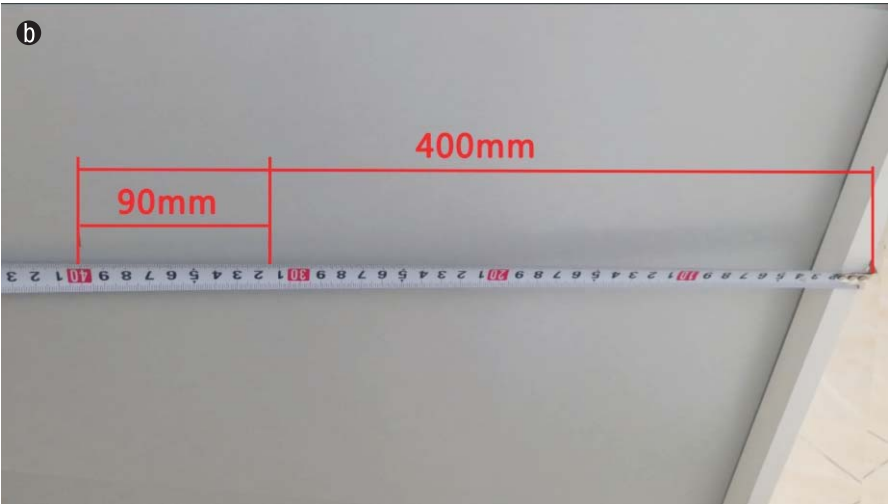
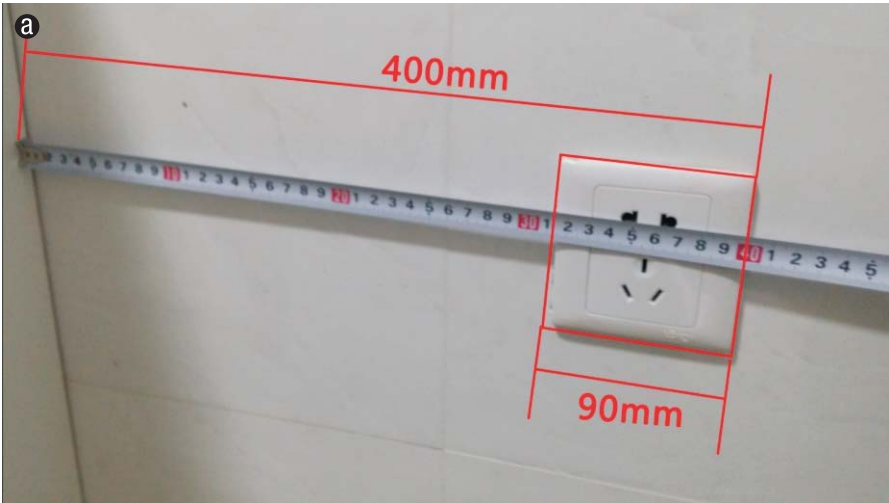


**8.2** Adjust the adjustable leg to make sure that each base cabinet are in the same horizontal level

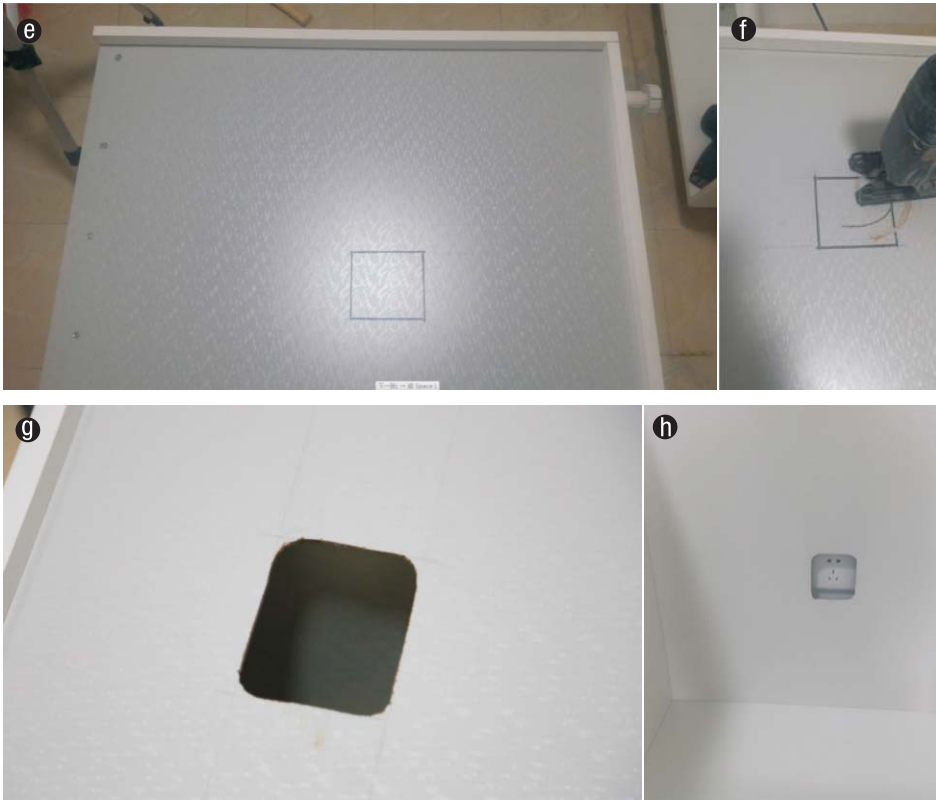
The position height=the adjustable leg(115mm)+ cabinet height



### 8.3 Drill holes on the back panel



### 8.3 Drill holes on the back panel



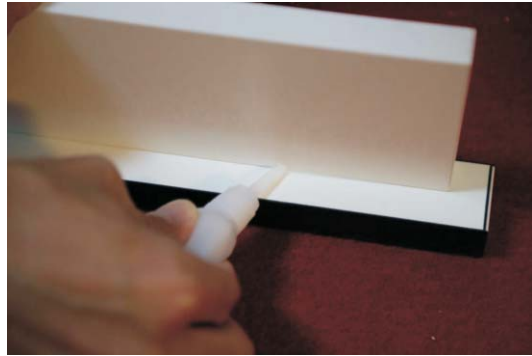
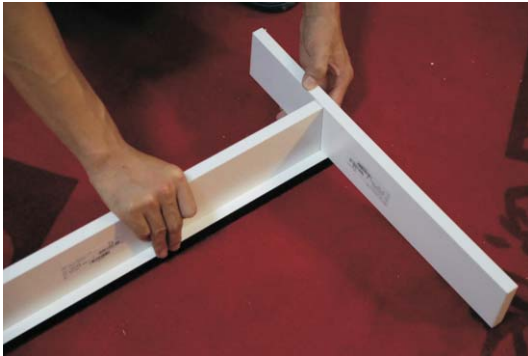
### 8.4 Connect the back panels with 25mm screw



## 8.5 Install the corner filler



Fix two panels with glue



Connect the two panels with bracket





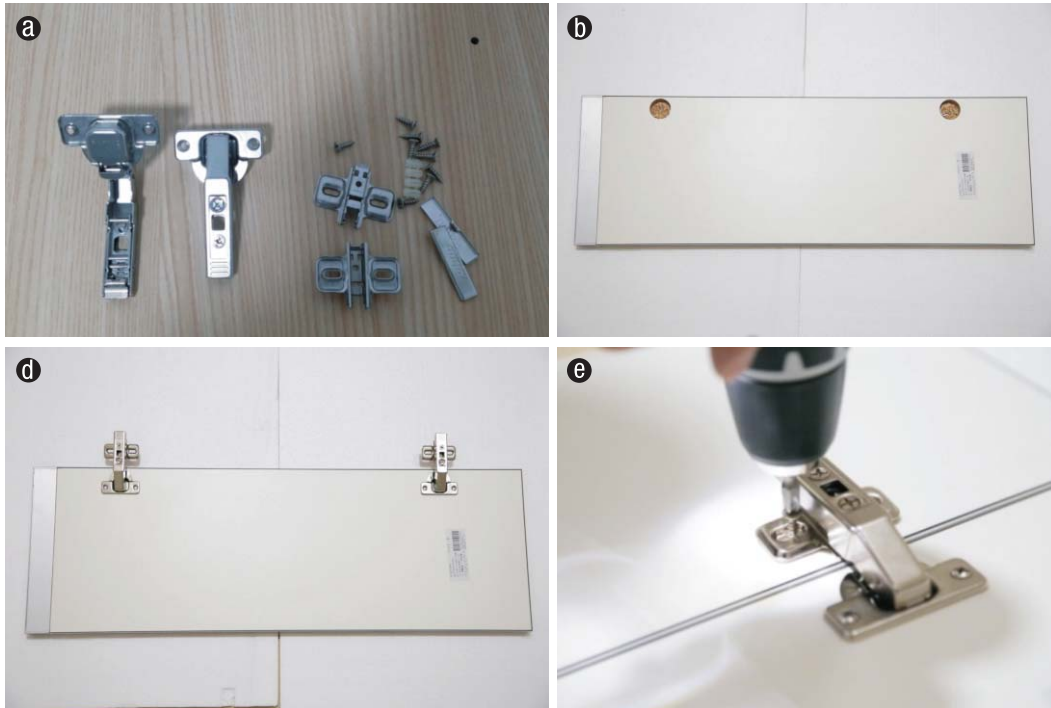
## 8.5 Install the corner filler

Connect the filler and the cabinet with 25mm screw



**8.6** Install the corner door

**8.6.1** Install the 180° hinge



**8.6.2** Separate the two panels



**8.6.3** Fix the corner filler to the cabinet, then connect to the door panel



**8.6.4** Complete the installation



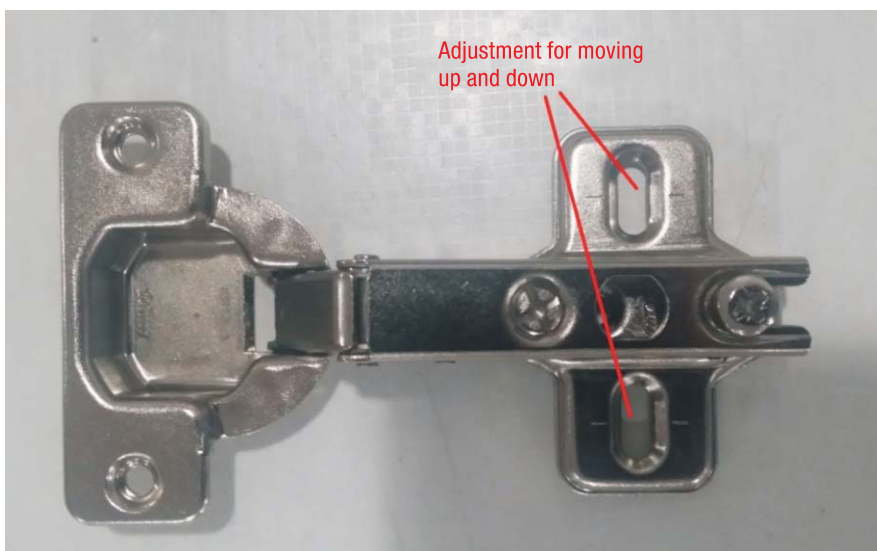
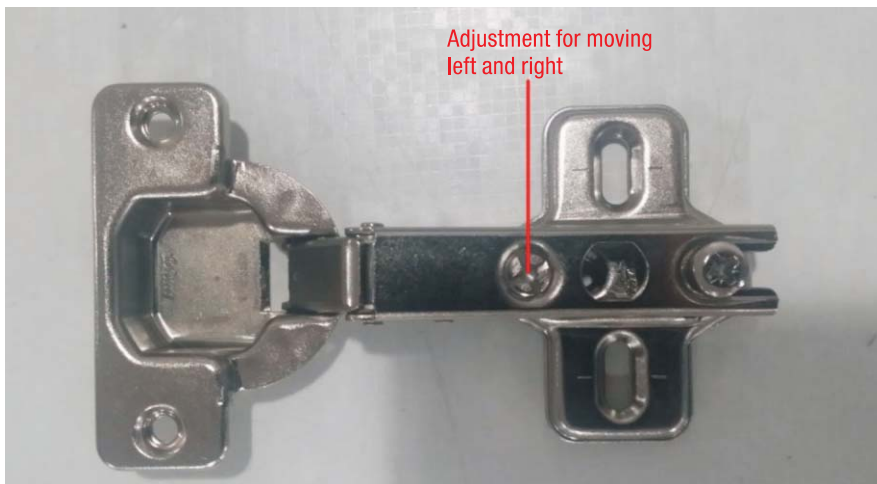
**10.1.2** Fix the hinge to the door panel



**10.1.3** Fix the base to the door



**10.1.4** Adjust the hinge.(the front one is for moving back and forth, and the back one is for moving right and left)



## 10.2 Install the Door Panle

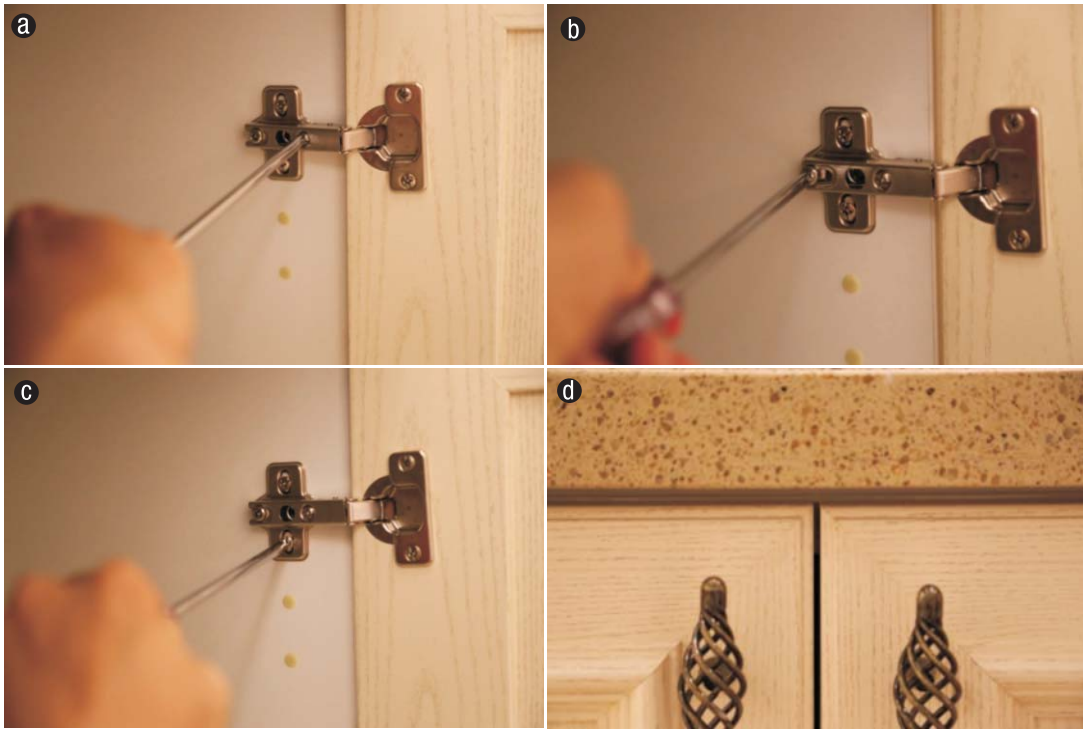
10.2.1 Fix the idle hole insert to the holes. (Only modular cabinet has got the system holes)



10.2.2 Make sure the door is in line with the bottom part of the cabinet, then fix it to the carcass



**10.2.3** If the doors are not in the same line after fixing, then we need to adjust the doors



**10.2.4** Install the hinge cover after adjusting the door

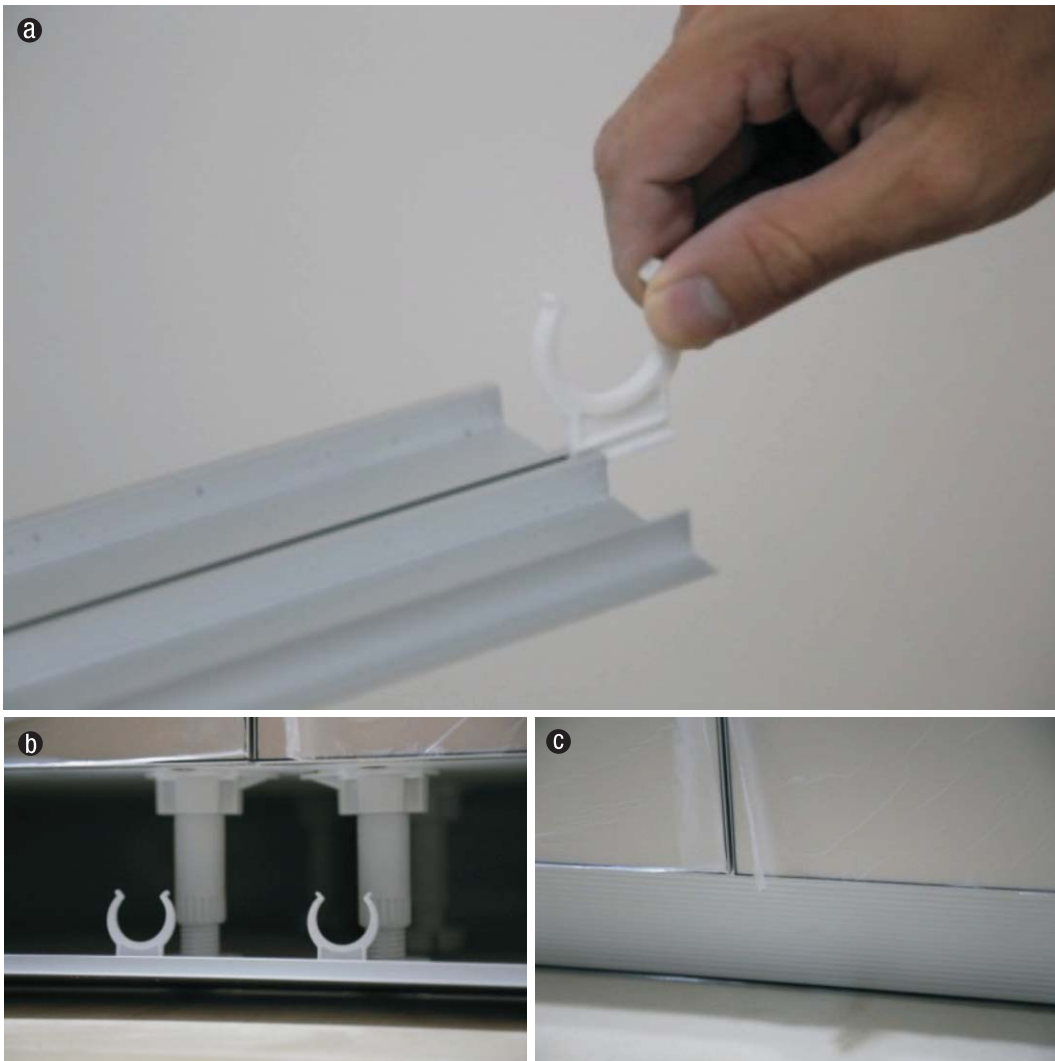


### 10.3 Install the Handle

Fix the screw to the door



### 10.4 Install the Kickboard





## 10.5 Install the buffer

Install BM–H02 with exterior cover in the interior part of the side panel



Install the buffer BM–H02 in the buffer hole



## 10.6 Install the plastic buffer insert

To protect the carcass when close the door



## 11 Clean

Clean the cabinets and the countertops

